

Black-bellied anglerfish (*Lophius budegassa*) in divisions 7.b–k, 8.a–b, and 8.d (west and southwest of Ireland, Bay of Biscay)

ICES advice on fishing opportunities

ICES advises that when the precautionary approach is applied, catches in 2019 should be no more than 10 799 tonnes.

Management of *Lophius budegassa* and *L. piscatorius* under a combined species TAC prevents effective control of the single-species exploitation rates and could lead to the overexploitation of either species.

Stock development over time

The stock size index has been relatively stable since 2009. In the most recent year available (2016) the index showed an increase in biomass. Fishing pressure has decreased in recent years and is now below F_{MSY} .

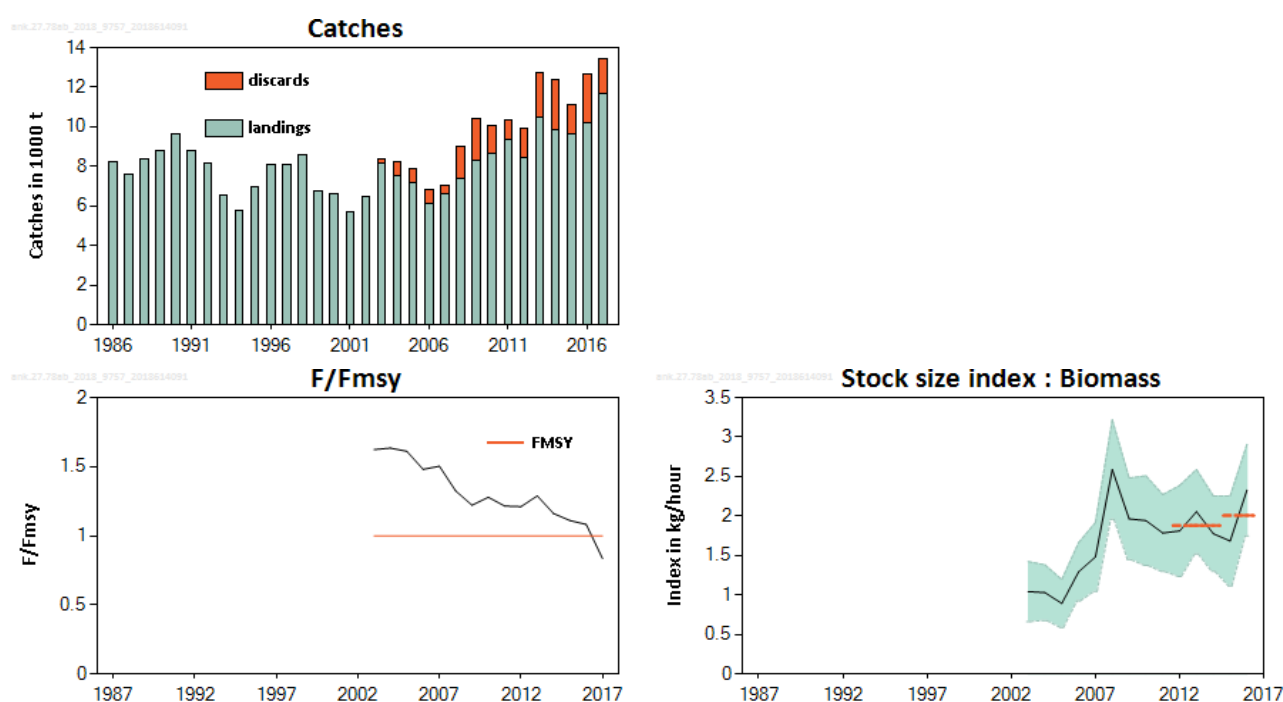


Figure 1 Black-bellied anglerfish in Subarea 7 and divisions 8.a–b and 8.d. Summary of the stock assessment. ICES estimated landings and discards (no discard data available prior to 2003). The stock biomass index is calculated from the combined IE-IGFS-WIBTS-Q4 and FR-EVHOE-WIBTS-Q4 surveys. This index was not available for 2017 because the French survey did not take place in that year.

Stock and exploitation status

ICES assesses that fishing pressure on the stock is below F_{MSY} . No reference points for stock size have been defined for this stock.

Table 1 Black-bellied anglerfish in Subarea 7 and divisions 8.a–b and 8.d. State of the stock and fishery relative to proxy reference points.

		Fishing pressure			Stock size					
		2015	2016	2017	2015	2016	2017			
Maximum sustainable yield	$F_{MSYproxy}$	✘	✘	✔	Appropriate	$MSY B_{trigger}$?	?	?	Undefined
Precautionary approach	F_{pa}, F_{lim}	?	?	?	Undefined	B_{pa}, B_{lim}	?	?	?	Undefined
Management plan	F_{MGT}	–	–	–	Not applicable	B_{MGT}	–	–	–	Not applicable
Qualitative evaluation	-	↘	↘	↘	Decreasing	-	↘	↗	?	Unknown

Catch scenarios

ICES framework for category 3 stocks was applied (ICES, 2012). The combined IE-IGFS-WIBTS-Q4 and FR-EVHOE-WIBTS-Q4 biomass index was used as the index of stock development. The advice is based on a comparison of the two latest index values (index A) with the three preceding values (index B), multiplied by the recent advised landings and divided by (1 – discard rate).

The index is estimated to have increased by less than 20% and thus the uncertainty cap was not applied.

Fishing mortality is below proxies of the MSY reference points. Stock size is unknown. Following ICES (2016a) – since the stock size is unknown, the fishing mortality only reduced below F_{MSY} in the last year, and it is not a bycatch species – the precautionary buffer was applied to the advice.

The discard rate is 15% of the total catch (average of the last three years).

Table 2 Black-bellied anglerfish in Subarea 7 and divisions 8.a–b and 8.d. The basis for the catch scenarios*. For stocks in ICES data categories 3–6, one catch scenario is possible.

Index A (2015–2016)		2.01 kg hr ⁻¹
Index B (2012–2014)		1.88 kg hr ⁻¹
Index ratio (A/B) *		1.07
Uncertainty cap	Not applied	-
Advised landings for 2017 and 2018 (issued in 2016)		10757 tonnes
Unwanted catch rate		15%
Precautionary buffer	Applied	0.8
Catch advice **		10799 tonnes
% Advice change ^		Not comparable

*The figures in the table are rounded. Calculations were made with unrounded inputs and computed values may not match exactly when calculated using the rounded figures in the table.

** [Advice for 2017 and 2018, issued in 2016] × [index ratio] × [precautionary buffer] / (1 – [unwanted catch rate]).

^ Advice value for 2019 relative to advice value for 2018. The advice for 2018 was for landings, while the advice for 2019 is for catches; these values cannot be compared.

Advice for 2019 is almost the same as the advice for both 2017 and 2018 because the increase due to the index ratio and discard “uplift” (related to the landings obligation) is offset by the precautionary buffer.

Basis of the advice

Table 3 Black-bellied anglerfish in Subarea 7 and divisions 8.a–b and 8.d. The basis of the advice.

Advice basis	Precautionary approach
Management plan	ICES is not aware of any currently agreed precautionary management plans for anglerfish (<i>L. budegassa</i>) in this area. The European Commission has proposed a multiannual management plan (MAP) for the Western Waters, which is not yet finalized (EC, 2018).

Quality of the assessment

The stock was benchmarked in 2018. Discard estimates have been derived and range from 10% to 25%.

The combined IE-IGFS-WIBTS-Q4 and FR-EVHOE-WIBTS-Q4 surveys cover a large part of the stock distribution and most of the depth range of the stock (< 500 m). However, catch rates are low, leading to notable uncertainty around the index.

The FR-EVHOE-WIBTS-Q4 survey was not completed in 2017 due to a vessel breakdown; therefore, the advice is based on the most recent data available (2012–2016).

Although stock size is unknown and uncertainty around the biomass is large, some additional information suggests that the stock size may have increased in recent years:

- The IE-IGFS-WIBTS-Q4 survey 2016–2017 gave the two highest biomasses observed (Figure 2).
- Both IE-IGFS-WIBTS-Q4 and FR-EVHOE-WIBTS-Q4 surveys registered strong recruitment in 2013 (Figure 2). These fish are expected to contribute to the spawning-stock biomass in 2016 and 2017.
- The biomass of white anglerfish (*L. piscatorius*) in the same stock area is increasing and the proportion of black anglerfish (*L. budegassa*) in the catches is virtually unchanged, suggesting that black anglerfish biomass is increasing at a similar rate.

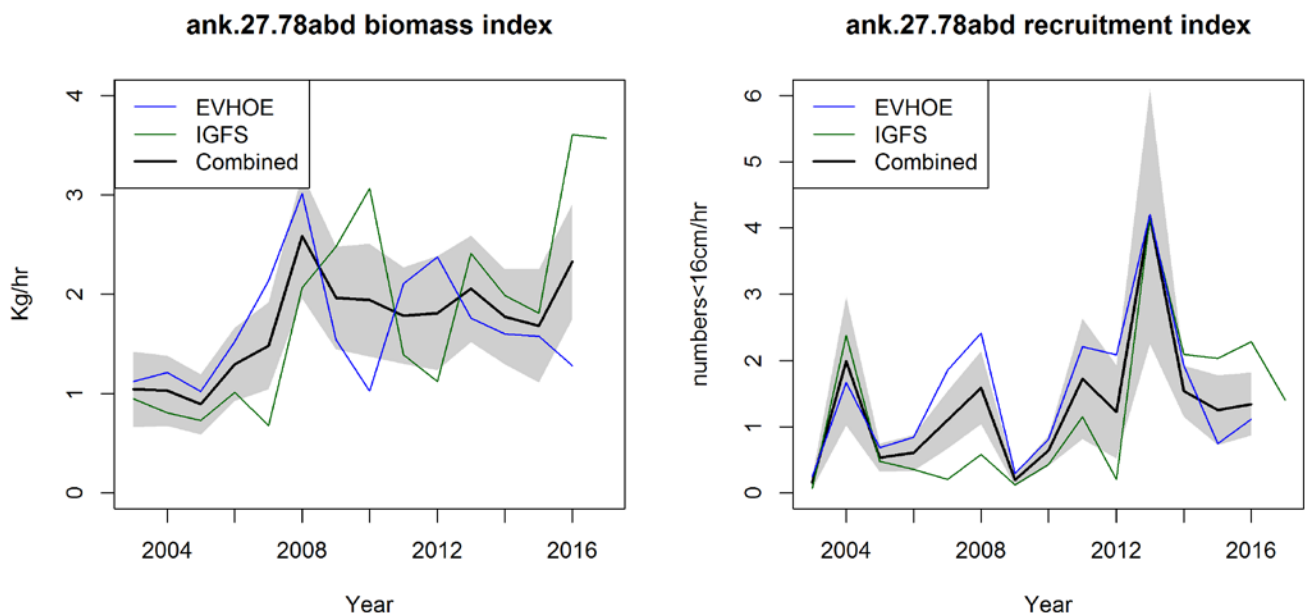


Figure 2 Black-bellied anglerfish in Subarea 7 and divisions 8.a–b and 8.d. Biomass and recruitment indices of the IE-IGFS-WIBTS-Q4 and FR-EVHOE-WIBTS-Q4 surveys and the combined index with 95% confidence intervals.

Issues relevant for the advice

The two anglerfish species (*L. piscatorius* and *L. budegassa*) are not totally separated in the landings. A single TAC covers both species and species-specific landings are estimated by ICES (ICES, 2018a). ICES considers that management of the two anglerfish species under a combined TAC prevents effective control of the single-species exploitation rates and could lead to overexploitation of either species.

The area of the stock assessment now includes ICES Division 7.a (ICES, 2018b).

Reference points

Table 4 Black-bellied anglerfish in Subarea 7 and divisions 8.a–b and 8.d. Reference points, values, and their technical basis. No reference points are defined for this stock in terms of absolute values.

Framework	Reference point	Value	Technical basis	Source
MSY approach	MSY $B_{\text{trigger_proxy}}$			
	$F_{\text{MSY_proxy}}$	1	Relative value (F/F_{MSY}) from YPR and mean length-based Z.	ICES (2018a)
Precautionary approach	B_{lim}			
	B_{pa}			
	F_{lim}			
	F_{pa}			
Management plan	SSB_{mgt}			
	F_{mgt}			
	MAP MSY B_{trigger}			
	MAP B_{lim}			
	MAP F_{MSY}			
	MAP range F_{lower}			
	MAP range F_{upper}			

Basis of the assessment

Table 5 Black-bellied anglerfish in Subarea 7 and divisions 8.a–b and 8.d. The basis of the assessment.

ICES stock data category	3 (ICES, 2016a).
Assessment type	Survey trends-based assessment (ICES, 2016b, 2016c, 2018a, 2018b).
Input data	Combined survey index (IE-IGFS-WIBTS-Q4 and FR-EVHOE-WIBTS-Q4).
Discards and bycatch	Discarding is in the order of 15%; these are nearly all undersize fish.
Indicators	None.
Other information	This stock was benchmarked in 2018 (ICES, 2018b).
Working group report	Working Group for the Bay of Biscay and the Iberian Waters Ecoregion (WGBIE)

Information from stakeholders

No additional information is available.

History of the advice, catch, and management

Table 6 Black-bellied anglerfish in Subarea 7 and divisions 8.a–b and 8.d. History of ICES advice, the agreed TAC, and ICES estimates of landings. All weights are in tonnes.

Year	ICES advice	Catch/landings corresponding to advice	Catch/landings corresponding to advice (both <i>Lophius</i> species)	Agreed TAC *,**	ICES landings (both <i>Lophius</i> species)***	Landings <i>L. budegassa</i>	Catches <i>L. budegassa</i>
1986	Not assessed	-	-		33200	8217	
1987	Not assessed	-	-	39080	30710	7618	
1988	Not assessed	-	-	42990	29696	8381	
1989	Not assessed	-	-	42990	32835	8821	
1990	Not assessed	-	-	42990	30613	9631	
1991	No advice	-	-	42990	25543	8779	
1992	No advice	-	-	42990	21793	8176	
1993	Concern about <i>L. pisc.</i> SSB decrease	-	-	25100	21462	6567	
1994	SSB decreasing, still inside safe biological limits	-	-	23900	22946	5745	
1995	No increase in F	-	20000	23200	27987	6954	
1996	No increase in F	-	30300	30400	31425	8093	
1997	No increase in F	-	34300	34300	31099	8116	
1998	No increase in F	-	33000	34300	29074	8598	
1999	No increase in F	-	32900	34300	25529	6738	
2000	At least 20% decrease in F	-	< 22300	29600	21089	6644	
2001	Reduce F below F_{pa}	-	< 27600	27600	23019	5728	
2002	Reduce F below F_{pa}	-	< 19900	23700	28588	6505	
2003	At least 30% decrease in F	-	< 16400	21000	36105	8171	8351
2004	At least 10% decrease in F	-	< 26700	26700	36565	7537	8213
2005	Maintain F below F_{pa}	-	< 37800	31200	35056	7187	7914
2006	Maintain F below F_{pa}	-	< 33900	34000	33783	6131	6835
2007	Maintain F below F_{pa}	-	< 36000	36000	37821	6608	7021
2008	Less than average landings	-	< 33000	36000	34452	7399	8985
2009	Same advice as last year	-	< 33000	36000	30122	8287	10400
2010	No increase in effort	-	-	41400	30841	8626	10062
2011	No increase in effort	-	-	40900	34006	9348	10319
2012	Reduce catch	-	-	38900	36618	8429	9888
2013	Reduce catch by the rate of biomass decrease (14% for <i>L. piscatorius</i> and 20% for <i>L. budegassa</i>) ##	< 6900 ##	< 24800 ##	36953	41086	10475	12760
2014	Increase landings by the rate of biomass increase (20% for <i>L. piscatorius</i> and 20% for <i>L. budegassa</i>) ##	< 10757 ##	< 37448 ##	42496	38306	9832	12402
2015	Same landings advice for <i>L. budegassa</i> as in 2014 ##	< 10757 ##	< 37448 ##	42496	37508	9649	11109
2016	Precautionary approach (same landings value as advised for 2014)	≤ 10757 ##	< 37448 ##	42496	39630	10220	12660
2017	Precautionary approach (same landings value as advised for 2016)	≤ 10757 ##	< 37448 ##	42496	37325	11690	13460
2018	Precautionary approach (same landings value as advised for 2016)	≤ 10757 ##	< 37448 ##	42496			
2019 ***	Precautionary approach (catch advice)	≤ 10799	≤ 41841				

* Applies to the combined species.

** Includes Division 8.e.

*** Includes Division 7.a since the 2018 benchmark (ICES, 2018b).

Advice refers to landings, not catch.

History of catch and landings

Table 7 Black-bellied anglerfish in Subarea 7 and divisions 8.a–b and 8.d. Catch distribution by fleet in 2017 as estimated by ICES. All weights are in tonnes.

Total catch (2017)	Landings					Discards
13460	75%	9%	7%	7%	1%	1770
	Otter trawl demersal fish	Otter trawl <i>Nephrops</i>	Beam trawl	Gillnet	Other	
	11690					

Table 8 Black-bellied anglerfish in Subarea 7 and divisions 8.a–b and 8.d. History of the ICES estimates of the catch and landings by area and for recent years by country. All weights are in tonnes.

Year	ICES estimated landings			Discards	ICES estimated landings					ICES estimated discards				
	7	8abd	total	78abd	Spain	France	UK	Ireland	Other	Spain	France	UK	Ireland	Other
1986	6443	1774	8217											
1987	5115	2503	7618											
1988	6346	2035	8381											
1989	6434	2387	8821											
1990	7060	2571	9631											
1991	6254	2525	8779											
1992	6008	2168	8176											
1993	4648	1919	6567											
1994	3949	1796	5745											
1995	5204	1750	6954											
1996	5979	2114	8093											
1997	6187	1929	8116											
1998	6509	2089	8598											
1999	5068	1670	6738											
2000	5219	1425	6644											
2001	4478	1250	5728											
2002	4734	1771	6505		2914	3019	146	309	119					
2003	6256	1916	8171	179	3995	3695	181	180	119	81	80	14	2	3
2004	5358	2178	7537	676	3346	3553	256	224	157	278	262	40	80	17
2005	5214	1974	7187	727	3317	3089	248	365	167	214	344	20	133	16
2006	4675	1456	6131	704	3020	2707	133	200	71	355	306	5	30	9
2007	4857	1751	6608	413	2767	3180	151	348	162	275	35	5	80	17
2008	6039	1360	7399	1585	3282	3125	280	508	205	1214	276	12	27	56
2009	6478	1809	8287	2113	3790	3150	306	797	244	1158	570	21	293	70
2010	6812	1815	8626	1436	3183	3669	477	981	316	810	441	20	109	56
2011	7416	1933	9348	971	4314	3285	425	941	382	540	298	4	90	39
2012	5959	2471	8429	1459	3580	3644	376	621	209	951	194	11	278	25
2013	7274	3200	10475	2285	4687	4242	494	615	436	1463	504	14	237	66
2014	6114	3718	9832	2570	2575	5355	878	720	304	1058	961	51	425	75
2015	6284	3365	9649	1460	2134	5425	1055	839	197	52	1045	58	252	52
2016	6127	4093	10220	2441	2036	5850	1076	970	288	453	1165	54	680	88
2017	7518	4172	11690	1770	2228	7255	1198	793	216	250	1121	22	338	39

Summary of the assessment

Table 9 Black-bellied anglerfish in Subarea 7 and divisions 8.a–b and 8.d. Assessment summary: Landings, discards, F/F_{MSY} and biomass (kg [30 min]^{-1} , 90% confidence intervals) indices from the FR-EVHOE-WIBTS-Q4 survey. All weights are in tonnes.

Year	Biomass index	High	Low	Landings	Discards	F/F_{MSY}
	kg hr^{-1}			tonnes		Length >36 cm
1986				8217		
1987				7618		
1988				8381		
1989				8821		
1990				9631		
1991				8779		
1992				8176		
1993				6567		
1994				5745		
1995				6954		
1996				8093		
1997				8116		
1998				8598		
1999				6738		
2000				6644		
2001				5728		
2002				6505		
2003	1.04	1.42	0.66	8171	179	1.62
2004	1.03	1.38	0.68	7537	676	1.63
2005	0.89	1.2	0.59	7187	727	1.61
2006	1.29	1.66	0.93	6131	704	1.48
2007	1.48	1.92	1.05	6608	413	1.50
2008	2.59	3.22	1.96	7399	1585	1.32
2009	1.96	2.48	1.45	8287	2113	1.22
2010	1.94	2.51	1.38	8626	1436	1.28
2011	1.79	2.27	1.3	9348	971	1.22
2012	1.81	2.39	1.24	8429	1459	1.21
2013	2.06	2.59	1.52	10475	2285	1.29
2014	1.78	2.25	1.3	9832	2570	1.16
2015	1.68	2.25	1.11	9649	1460	1.11
2016	2.33	2.91	1.75	10220	2441	1.08
2017*				11690	1770	0.84

* No survey index available.

Sources and references

EU. 2018. Proposal for a REGULATION OF THE EUROPEAN PARLIAMENT AND OF THE COUNCIL establishing a multiannual plan for fish stocks in the Western Waters and adjacent waters, and for fisheries exploiting those stocks, amending Regulation (EU) 2016/1139 establishing a multiannual plan for the Baltic Sea, and repealing Regulations (EC) No 811/2004, (EC) No 2166/2005, (EC) No 388/2006, (EC) 509/2007 and (EC) 1300/2008. COM/2018/0149 final. 30 pp. <https://eur-lex.europa.eu/legal-content/EN/TXT/PDF/?uri=CELEX:52018PC0149&from=EN>.

ICES. 2012. ICES Implementation of Advice for Data-limited Stocks in 2012 in its 2012 Advice. ICES CM 2012/ACOM:68. 42 pp.

ICES. 2016a. Advice basis. *In* Report of the ICES Advisory Committee, 2016. ICES Advice 2016, Book 1, Section 1.2.

ICES. 2016b. Report of the Working Group for the Bay of Biscay and the Iberian waters Ecoregion (WGBIE), 13–19 May 2016, ICES HQ, Copenhagen, Denmark. ICES CM/ACOM:12. 513 pp.

ICES. 2016c. Report of the Workshop to consider MSY proxies for stocks in ICES category 3 and 4 stocks in Western Waters (WKPProxy), 3–6 November 2015, ICES Headquarters, Copenhagen. ICES CM 2015/ACOM:61. 183 pp.

ICES. 2018a. ICES. 2018. Report of the Working Group for the Bay of Biscay and the Iberian Waters Ecoregion (WGBIE), 3–10 May 2018, ICES HQ, Copenhagen, Denmark. ICES CM 2018/ACOM:12. 642 pp.

ICES. 2018b. Report of the Benchmark Workshop on Anglerfish Stocks in the ICES Area (WKANGLER), 12–16 February 2018, Copenhagen, Denmark. ICES CM 2018/ACOM:31. In preparation
<http://ices.dk/community/groups/Pages/WKAngler.aspx>.